

## ATouch USB Touchscreen Install Guide

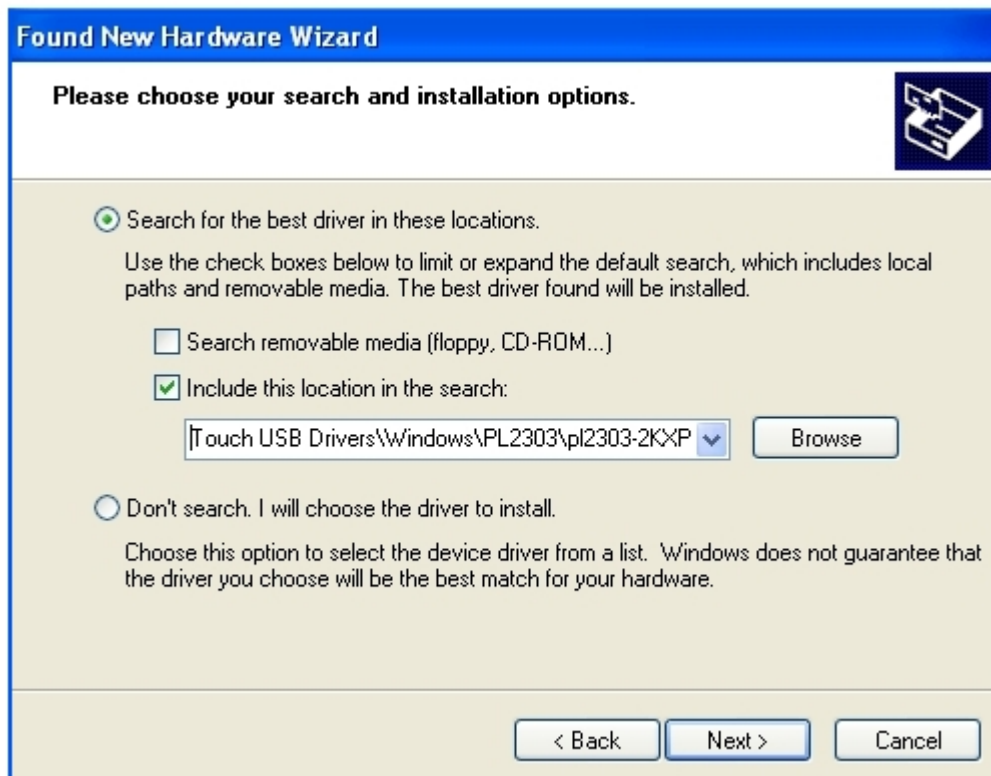
The complete procedure is divided into two parts: pl2303 and ATouch-2.0.exe.

**Part 1: Installing the pl2303 USB-to-Serial converter driver.(Use Windows XP for example)**

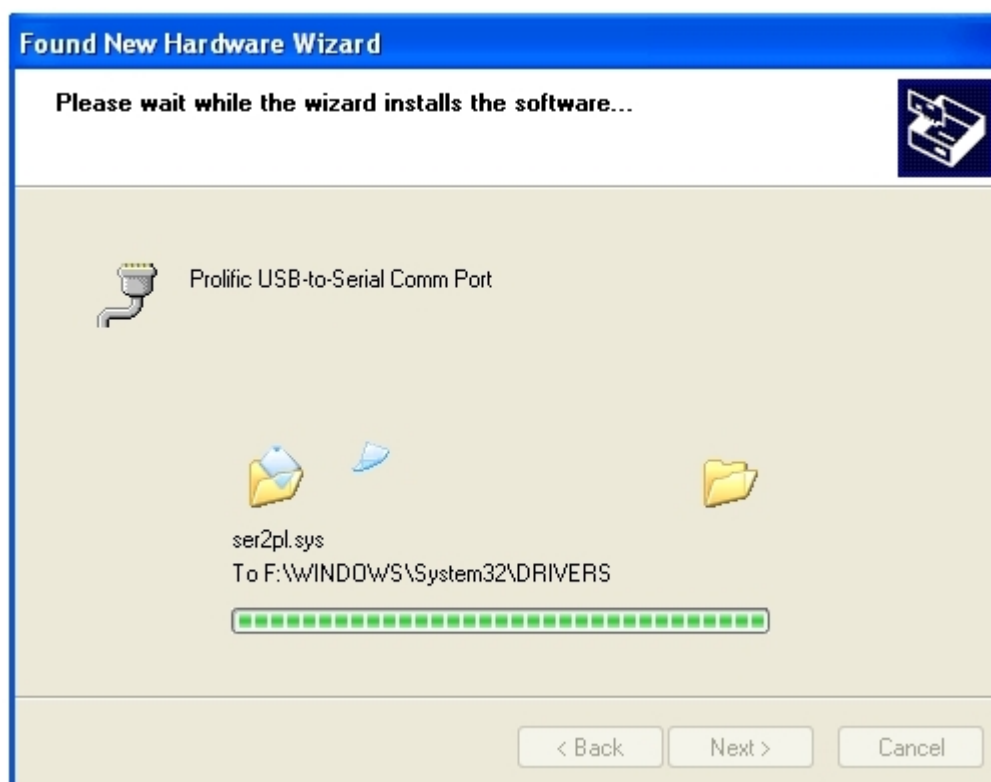
1. When your operating system is detected a new USB device, please choose the “Install from a list or specific location [Advanced]” item to install the pl2303 driver.



2. Please tick the “include this location in the search” item and click the Browse button to specify the correct path of its directory.



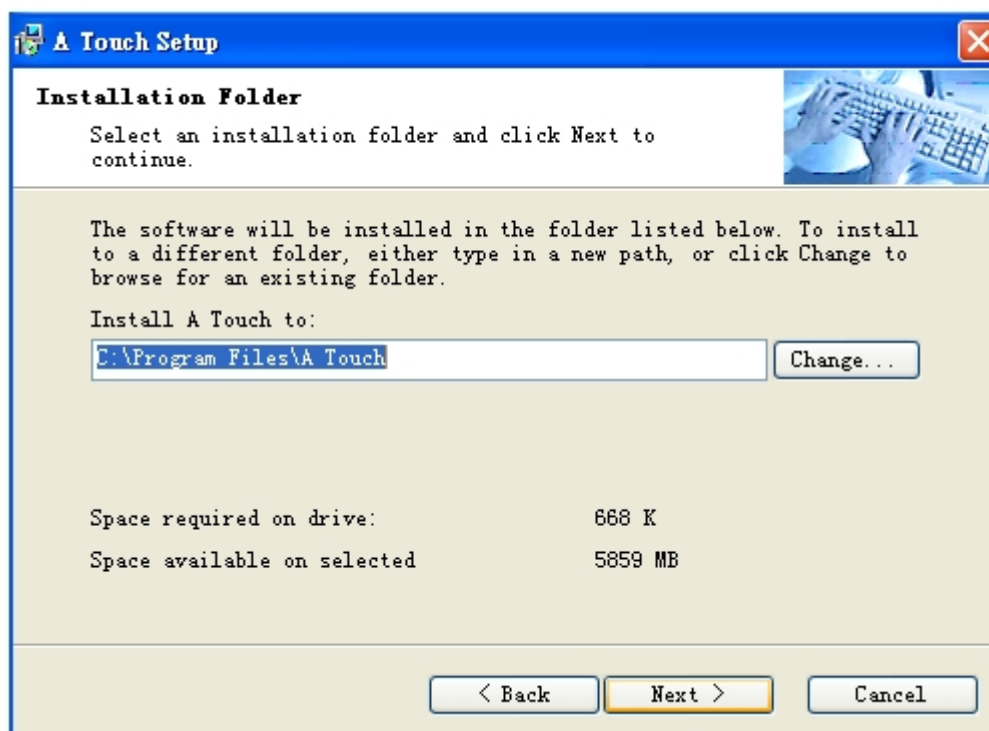
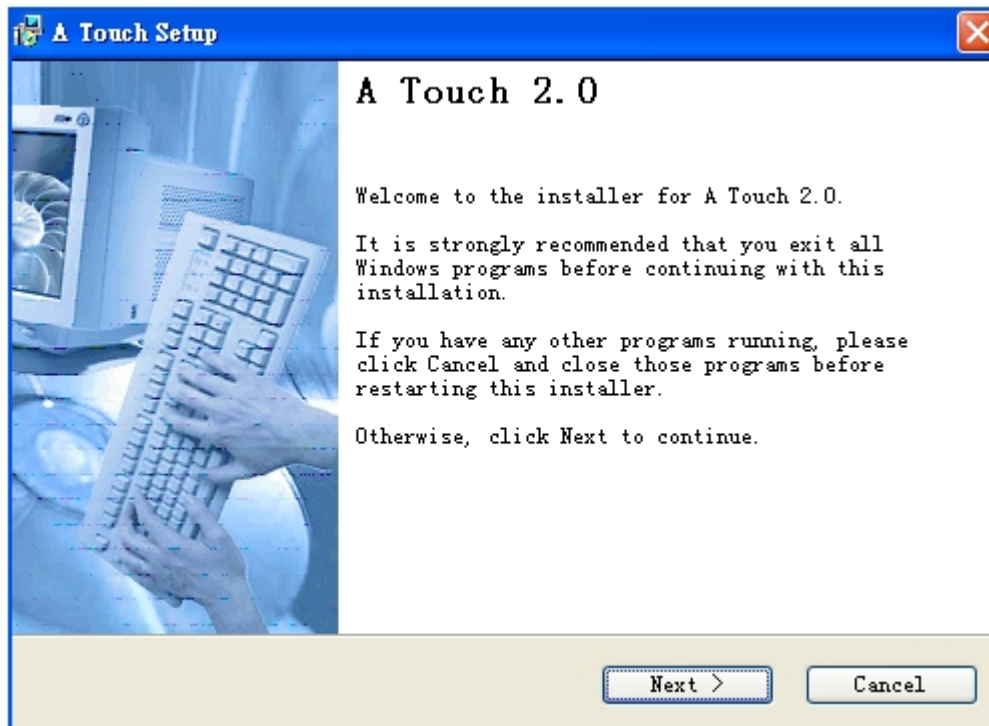
**3. The Hardware Wizard has found the driver and installing it.**

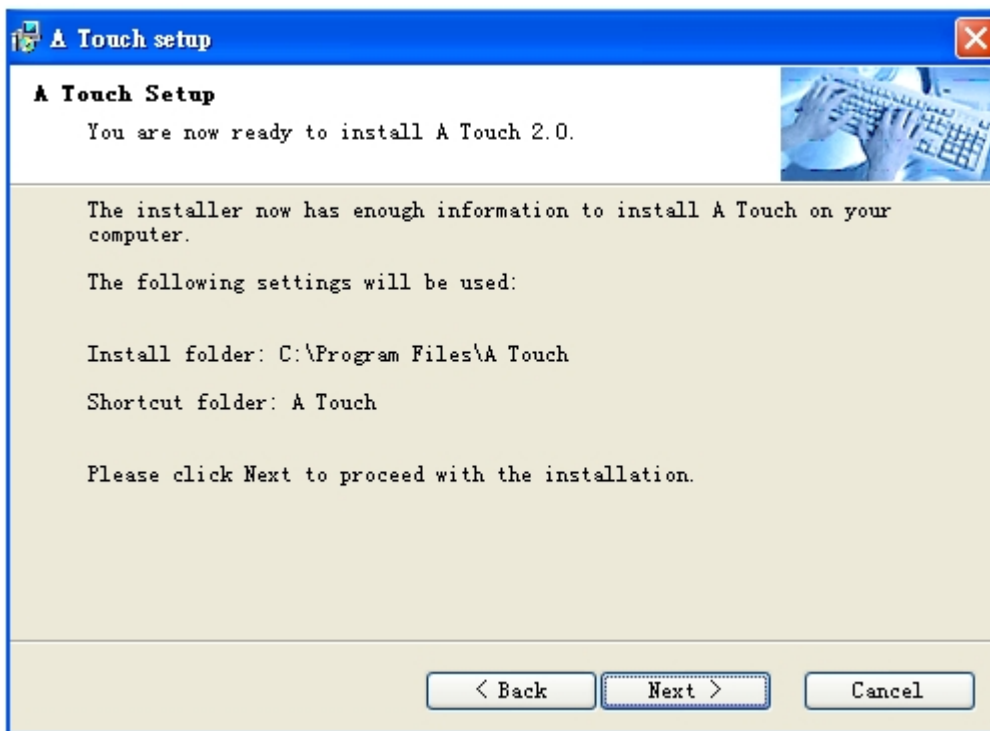
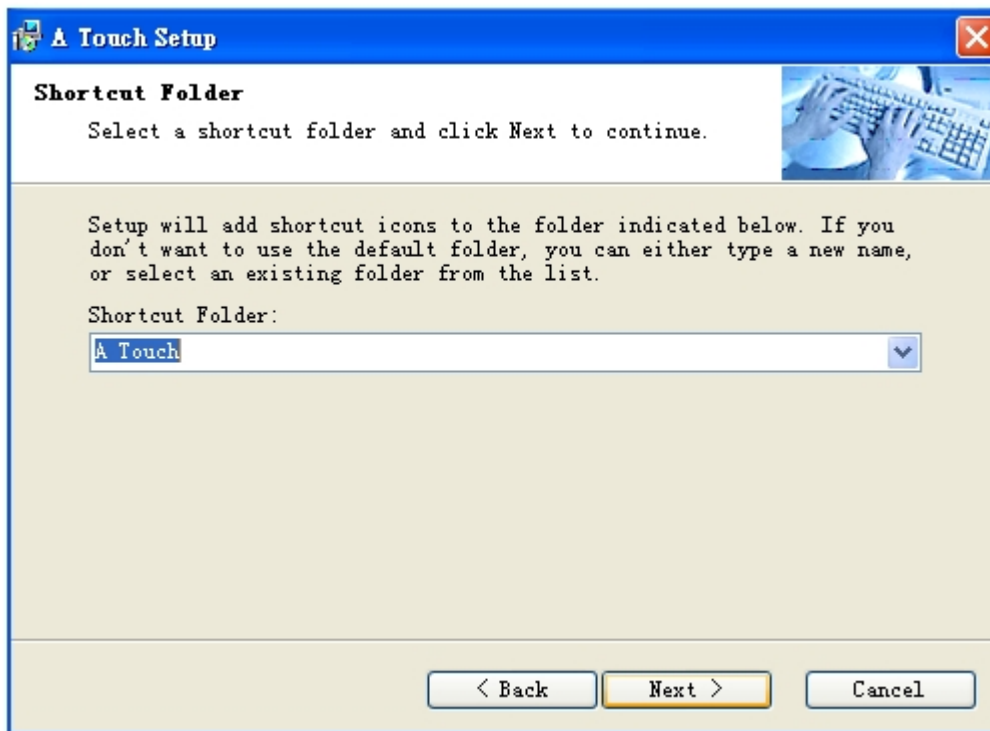


**4. After these three steps, the USB touch screen has been activated.**

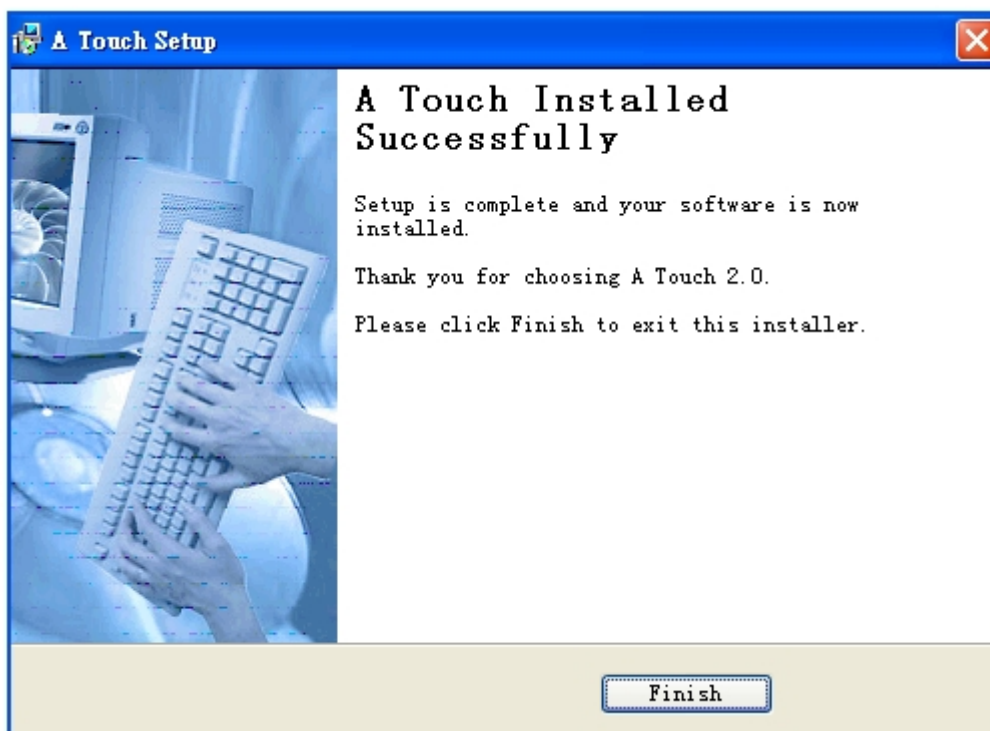
## Part 2: Installing the ATouch-2.0 touch screen driver.

1. Please execute the ATouch-2.0.exe in your diskette or other folder, and follow its instructions to complete the installation.

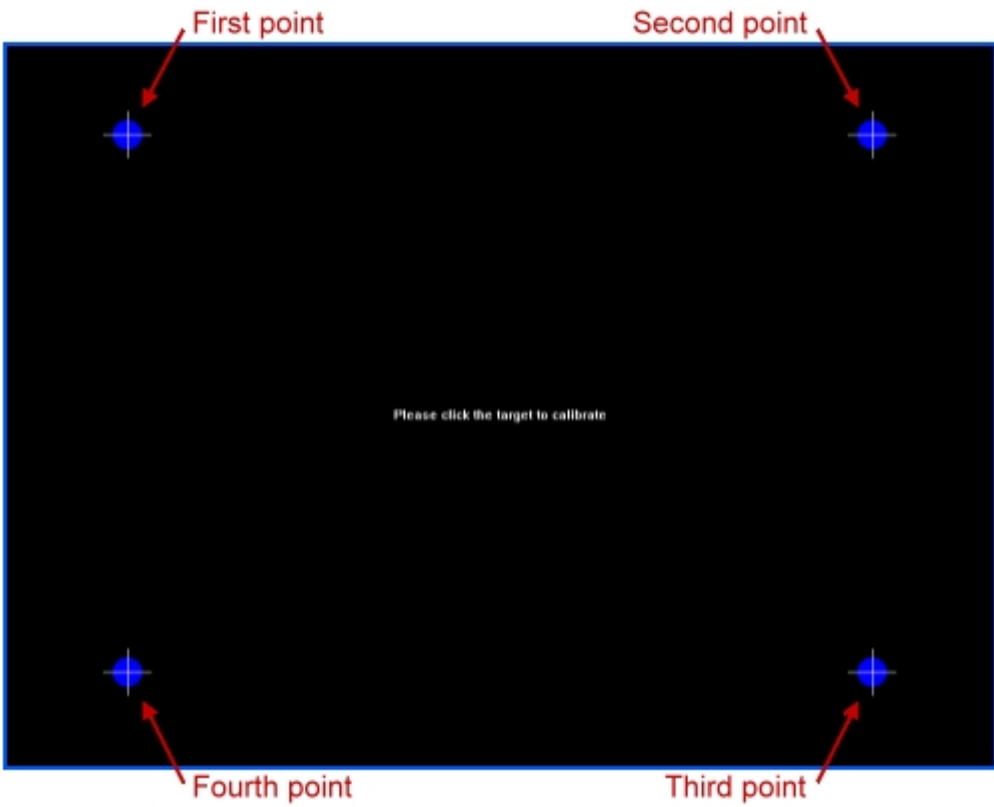




2. Please select the COM3 or COM4 port.



**3. Please touch the shown targets sequentially to complete the calibration.**



Calibration Complete. Please press ENTER, or touch the touchscreen to save and exit.  
Press SPACE to calibrate again.  
Press ESC to discard the result and exit.